

REPORT

IMPACT

2021

SHAKESPEARE
773B

Learning and joy still exist.
Together.

Shane Dwyer, Yeppoon Senior High School QLD

Bell Shakespeare acknowledges the First Nations peoples of the lands and waters on which we rehearse, perform and work across Australia. We recognise their continuous connection to Country, community and culture and pay our respects to Elders past and present. We honour the sharing of traditional stories; stories that have been passed down through generations.

WORK THAT IS TIMELESS AND BORDERLESS.

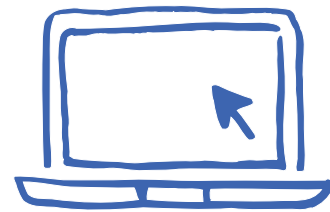
Every day we strive to ensure Shakespeare's work lives and breathes in theatres, schools and communities throughout Australia. All Australians, no matter where they live or what their circumstance, should have the opportunity to engage meaningfully with Shakespeare's work.

IN 2021



56,797

AUSTRALIANS HAD A LIVE THEATRE EXPERIENCE
WITH BELL SHAKESPEARE

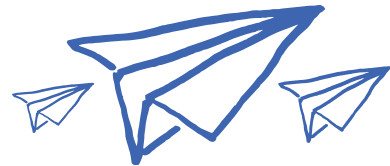


17,151

AUSTRALIANS ENGAGED IN BELL
SHAKESPEARE'S DIGITAL PROGRAMMING

50,035

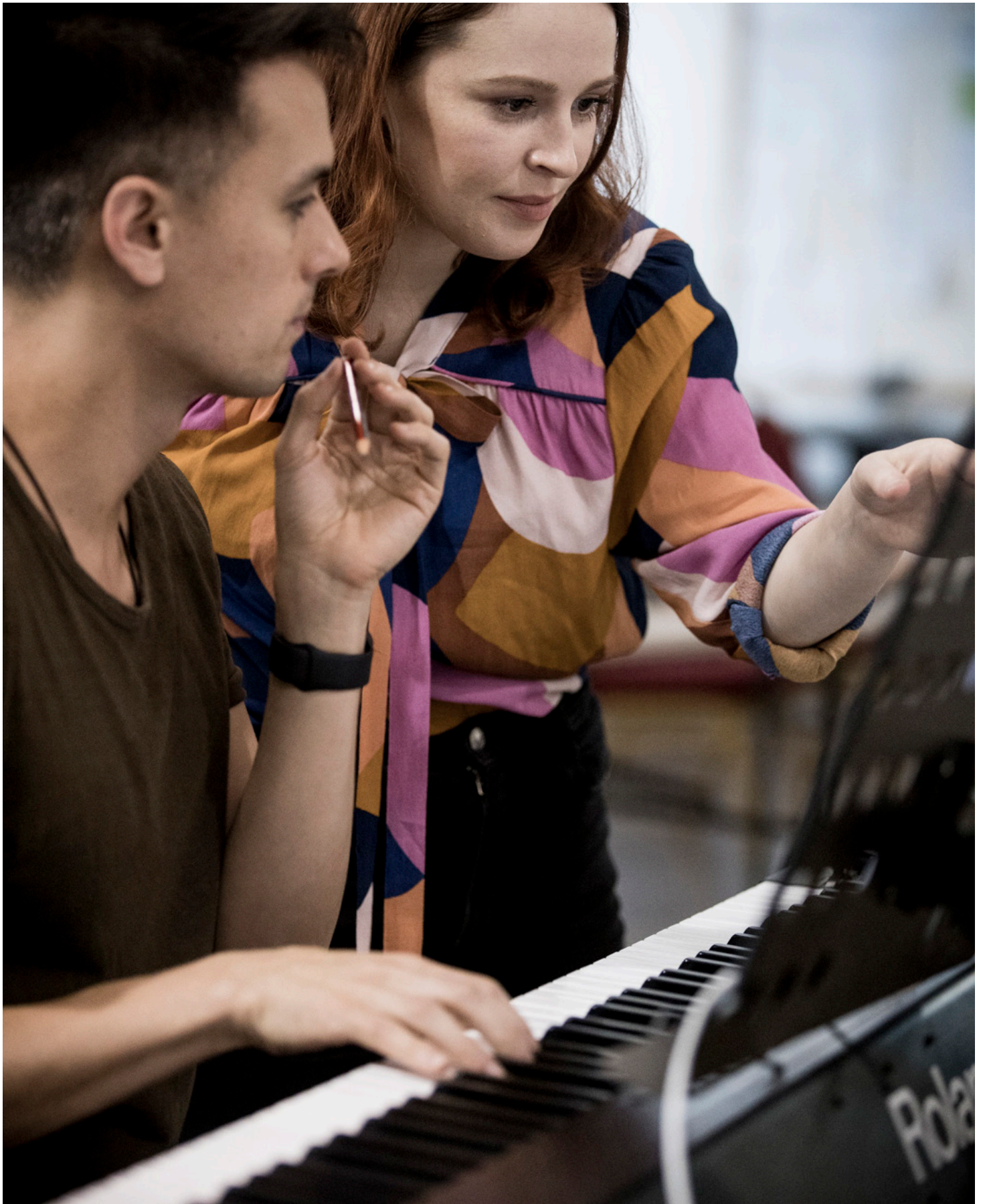
STUDENTS AND TEACHERS ENGAGED
IN OUR LEARNING PROGRAMS



EMPLOYED 49 ACTORS **26** CREATIVES **23** TEACHING ARTISTS **20** CREW

through our mainstage, digital and learning programs

69% OF FEDERAL ELECTORATES WERE REACHED BY BELL SHAKESPEARE'S LEARNING PROGRAMS



WELCOME TO OUR 2021 IMPACT REPORT



There is no denying that 2021 was another difficult year. We began with a feeling of cautious optimism after the disappointment and relentless cancellations of the previous year. We had carefully scheduled our season to deliver major touring activity in the second half of the year, not expecting the catastrophic lockdowns and national border closures to be instituted at the precise moment we were to open our national touring production.

In the moment, it was difficult not to feel defeated but one of the great strengths of this company is the ability of everyone to come together in times of crisis. It is with hindsight that we realise 2021 was in fact a year of incredible achievement with some truly inspiring moments for Bell Shakespeare.

In the face of national border closures and on-and-off lockdowns, The Players managed to complete 41 weeks of touring and delivered over 400 performances to schools across Australia. A *Midsummer Night's Dream*, our national touring production, bumped in and out of eight venues nationally and was performed to an audience of over 5,000 theatregoers. John Bell's superlative production *One Man In His Time* played sold-out seasons in Sydney and Canberra, and we were able to offer a number of smaller-scale public programs including Play In A Day and another thrilling debate in Melbourne. We also launched the Shakespeare Hub, offering open-access and in-depth digital resources on Shakespeare's plays to students and teachers.

We would like to acknowledge the ongoing affection and support that we received from our many friends and supporters and in particular the humbling generosity of the Neilson Foundation, whose donation of \$3 million to our Infinite Space campaign represents the largest single gift received in the Company's history. This extraordinary support has allowed us to establish ourselves in our new home as part of the Walsh Bay Arts Precinct and plan for future activity with confidence and certainty.

We hope you enjoy reflecting on our shared success in 2021- we promise it has been worth the wait!

Gill Perkins
Executive Director

Peter Evans
Artistic Director

THE PLAYERS: IN-SCHOOL PERFORMANCES

Breathing new life into Shakespeare's work for students across Australia.

"The students absolutely loved it. They thought it was funny, interesting and entertaining. When asked to highlight a part they enjoyed most, many would respond 'I just loved the whole show!'"

Natalie Lopes, Stanmore Public School NSW



The Players © Lionel Pepingco

The Players is Bell Shakespeare's renowned and longest-running education program. Two teams of three actors tour to primary and secondary schools across every state and territory with engaging, interactive performances. Each 50-minute performance intersperses Shakespeare's original text with modern commentary and includes a Q&A with the Players post-performance.

An enormous 35% of in-school performances were made possible thanks to the support of sponsors and our Sharing Shakespeare fund. In a year when many Australian families were doing it tough, this support made all the difference in giving access to live theatre to Australian schools.

2021 HIGHLIGHTS

In 2021, despite significant disruptions caused by COVID-19, The Players delivered a total of **412 performances** to schools across Australia. Primary school audiences enjoyed the wonderful collaboration with Andy Griffiths, *Just Romeo and Juliet!*, whilst secondary students were treated to *Such Sweet Sorrow* and *Macbeth: The Rehearsal*.

"It made the performances accessible to students and it was wonderful for all of us to experience some live theatre after the shutdown of 2020."

Erin Sheppard, Batemans Bay High School NSW



The Players © Jennifer McGrath

OUR REACH

48,577

students (36,015 secondary;
12,562 primary)

412

performances (196
metropolitan, 216 regional)

145

performances (35%) were
supported by a subsidy
or sponsorship

100

performances cancelled

“This performance has been instrumental in consolidating the understanding of the play for many of our students. It was an engaging and fun show for the whole audience.”

Caroline Cienciala, Cardijn College SA

“Every class teacher attended and the school principal. All stayed for the entire show. This speaks volumes for the quality of the performance.”

Barbara Palmer, Dobroyd Point Public School NSW



The Players © Jennifer McGrath

IMPACT

100%

of teachers would recommend The Players to other schools

99%

of teachers said in-school performances made Shakespeare more accessible for students

99%

of teachers said in-school performances provide students with an important live experience



The Players © Emma White

We would like to give special thanks to the following partners for their support:



PACKER FAMILY
FOUNDATION



SCULLY FUND



NSW REGIONAL ACCESS TOUR

Bringing live theatre to outback schools

A highlight of The Players' tour each year is the regional access tour supported by The Scully Fund. This generous support allows The Players to tour to parts of New South Wales which ordinarily would be logistically beyond our reach. Due to the very limited touring in 2020 we were not able to deliver this week of performances that year; instead, both teams of Players had the privilege of delivering a full week of performances supported by The Scully Fund in 2021.

Team Judith travelled to Far Western New South Wales, delivering performances to schools in Broken Hill, Cobar, Wilcannia, Bourke and Nyngan, whilst Team Hamnet travelled to the far South Coast of New South Wales, visiting schools in Eden, Moruya, Quaama, Ulladulla, Batemans Bay, Narooma and Mallacoota. For Team Hamnet, the experience was particularly profound as they were able to witness first-hand the destruction and disruption caused by the ravaging fires of the 2019/2020 summer. Departing from the usual format of in-school performances, The Players delivered an evening performance of *Just Romeo and Juliet!* to the community in Mallacoota. To express their thanks, a number of local residents invited The Players to their home for a family-style dinner. It was an incredibly special and memorable evening for the team and has been the first step in fostering a strong ongoing relationship between Bell Shakespeare and the students and community in this regional town.



The Players © Jennifer McGrath

TO BELL SHAKESPEARE

I just want to thank you all for the performance your company put on in Mallacoota.

For a town that was severely impacted by fires in Mallacoota a year ago (a quarter of the town's houses were lost, including mine) and then impacted by COVID, this town has been through a very challenging time to say the least. Many friends of mine (who also have children in Mallacoota) have really struggled with the combination of these two major events.

To have Bell Shakespeare come and lift the town with such an enjoyable, accessible and dynamic show was something very special. To see a room full of adults and kids totally engaged in the show was exactly what we needed. People were buzzing with excitement.

This idea was sparked by an interview I heard with John Bell on Radio National about making Shakespeare accessible. Not being very familiar with Shakespeare at all myself, the way it was presented by John got me interested.

As a musician myself I can relate to what a good performance is, which includes intention, honesty and a real commitment to the art form and connecting with the audience. The Players delivered this in spades. They were totally engaging, dynamic and professional, and left the whole room buzzing. I have no doubt that if Bell Shakespeare were to return to Mallacoota they would have a full house again.

On behalf of the Mallacoota community and from the bottom of our hearts, we are truly grateful. A BIG thank you to all the staff, sponsors and the actors who gave their all.

Regards

Justin Brady

Scan the QR code to read more about The Players' time on tour



STUDENT WORKSHOPS, PRIMARY WORKSHOPS, SHAKESPEARE SEMINARS

Giving students an active, immersive experience of Shakespeare's plays in their own classroom.

"Engaging and informative for students. They enjoyed the presenters and spoke positively afterwards. The contextual background info was beneficial as it allowed them to continue to cement what they already knew. The readings and analysis were most valuable."

Lauren Parsons, Springwood High School NSW



Waitara Public School NSW © Marnya Rothe

Each year, Bell Shakespeare teaching artists visit primary and secondary schools in person and online to deliver two-hour practical workshops and seminars that blend English and drama techniques to help students engage with Shakespeare's text. Students are on their feet speaking aloud, unpacking the language, themes and characters in their chosen play, or deep diving into a critical analysis of the text through a Shakespeare Seminar. Bell Shakespeare's in-school workshop programs offer an immersive exploration of Shakespeare, promoting critical and creative thinking and a practical experience of his plays.

REACH AND IMPACT

1,393

secondary students participated in Student Workshops across four states and territories

588

students reached through Shakespeare Seminars (online and in person)

332

primary students participated in Shakespeare Adventures workshops nationally

A total of 2,502 students nationally participated in a workshop or seminar program with Bell Shakespeare. Of these, 1,946 were metro-based and 556 students were based in regional Australia.

13

of 77 workshops and seminars were supported by a subsidy

100%

of teachers said the program they booked met or exceeded their expectations

"I thought it was amazing. It was really helpful and I will be using more workshop like these in the future."

Alice Curtis, Mendooran Central School NSW

HSC SEMINARS WITH THE UNIVERSITY OF SYDNEY

In 2021 Bell Shakespeare was also proud to present the very first HSC Shakespeare Seminars in partnership with The University of Sydney. The sessions were designed to directly link to HSC modules and give students the edge in upcoming exams by providing two perspectives – academic and dramatic.

Due to remote learning, all seminars were delivered by Zoom, presented by Resident Artist in Education Huw McKinnon, in conversation with a University of Sydney academic. Sessions were supported by live performances from The Players. All sessions included live discussion and conversations with students, tuning in from all over NSW including regional towns as far-reaching as Casino, NSW.

Seminars included:

- *Richard III / Looking For Richard* with Dr Huw Griffiths;
- *The Merchant of Venice* with Professor Liam Semler; and
- *The Tempest / Hag-Seed* with Professor Emerita Penny Gay.



Alma Public School NSW © Emma White



Moorefield Girls School NSW © Marnya Rothe

“The students loved the workshop and haven’t stopped talking about it since. They engaged with the content well and were provided with useful feedback.”

Lucy Rackham, Faith Lutheran College SA

We would like to give special thanks to The University of Sydney for their support.



ARTIST IN RESIDENCE

Professional artists in schools providing tailored content and long-form engagement

“Our students come from a range of complex backgrounds that inhibit their ability to access cultural activities. The Artist in Residence program broke down these barriers and brought culture, learning and access to our students. Their level of knowledge increased exponentially with each lesson provided by Bell Shakespeare. Thanks again for an outstanding opportunity. You have really made a difference to the lives of students within our school.”

Benjamin Kirkman, Heckenberg Public School NSW



Artist in Residence at Punchbowl Public School NSW
© Natasha Massie

Designed to impact the entire school from students to teachers, long-form Artist in Residence programs address a range of student needs including increasing literacy levels, self-confidence, self-expression, critical and creative thinking, public speaking, and communication skills. Bell Shakespeare teaching artists delivered eight separate residencies in 2021, in New South Wales, South Australia and Tasmania.

Of these, five residencies were able to be delivered thanks to the generous support of trusts and foundations.

With support from the Crown Resorts and Packer Family Foundations, three fully funded, 10-week Artist in Residence programs were delivered at Punchbowl Public School, Heckenberg Public School and Auburn Girls High School, all in Western Sydney. The Scully Fund supported a further residency at Yeoval Central School, catering to students from Kindergarten to Year 12 in regional New South Wales. Lastly, the St Mary McKillop Foundation supported a week-long residency at Reece High School in Devonport, Tasmania.



Artist in Residence at Punchbowl Public School NSW
© Natasha Massie

OUR REACH

8

Artist in Residence programs delivered in three states
(5 were made possible thanks to private support)

749

students participated in Artist in Residence programs

69%

metropolitan schools

31%

regional schools

57

teachers participated in Artist in Residence programs

12

teaching artists delivered the programs

“Our excitement and appreciation for having access to this opportunity cannot have a value placed on it. Our students would not have access to this opportunity without your support. Please accept our heartfelt thanks!”

Anne Thomas, Reece High School TAS



Artist in Residence at Punchbowl Public School NSW
© Natasha Massie

“Jess was just fantastic. She worked with a wide range of students and readily adapted her methods and content to meet their needs. She was really encouraging of the young women in the school and able to draw out even the most unconfident or unwilling to engage. This program does what schools should do for school communities like ours – comprising migrant and working-class girls who want to learn. It gave them cultural capital and confidence.”

Moira Nolan, Auburn Girls High School NSW



Artist in Residence at Punchbowl Public School NSW
© Natasha Massie

“The students who participated in the program were able to transfer their confidence into their classroom. They developed improved public speaking skills and displayed improvements in their inferential comprehension. It has been one of the best additional activities I have seen in a school. It was brilliant!”

Benjamin Kirkman, Heckenberg Public School NSW

MARY MACKILLOP
today

CROWN
RESORTS
FOUNDATION

PACKER FAMILY
FOUNDATION

SCULLY FUND

BELL SHAKESPEARE SHORTS FESTIVAL

Reimagining Shakespeare in the face of adversity



Changelings © Inner West Youth Theatre NSW

“Very powerful, bold, original, hypnotic – beautifully elucidates the pangs of adolescent love and pain, obsession and self-consciousness.”

Film Festival Judge Hilary Bell on *Changelings*

“There was a clever connecting of an elite school with Shakespearean references to ambition and success, and the pressures of these, the expectations for these boys’ futures.”

Film Festival Judge Hilary Bell on *We are such stuff as dreams are made on*

2021 marked the second year of the Bell Shakespeare Shorts Festival and it was met with great enthusiasm and talent from across the country. The festival saw an eclectic mix of live action and animation, and following the disruption of the country’s second significant lockdown period, some films were shot entirely on videoconferencing software.

In total, 36 films were submitted to the 2021 festival by young filmmakers based across Australia, from Cronulla to Christmas Island. Thanks to our judging panel – Peter Evans (Artistic Director, Bell Shakespeare), Geraldine Hakewill (Actor), Hilary Bell (Writer), Kyle Morrison (Actor/Director) and Chris Tan (2020 Bell Shakespeare Shorts Festival winner) – who scored and gave feedback on all shortlisted films.

Nine prizes were awarded in this year’s festival. Our 2021 winners were:

TOP SECONDARY FILM

Fool For Hire – David Remm, Bowral High School NSW

TOP PRIMARY FILM

The Writers’ Room – The McLean, McAlary and Buhagiar Families, NSW

EXCELLENCE IN PERFORMANCE

Hamlet – Director Elliot Broome, Performed by Yesie Lin Viota, The University High School, Parkville VIC and

The Writers’ Room – The McLean, McAlary and Buhagiar Families, NSW

Honourable Mention

Giulia Gets The Talk – Elisheba Femia, Beacon Hill NSW

EXCELLENCE IN DIRECTION

Violent Ends – Max Cadzow-Smith & Sam Parker, Gladstone QLD

EXCELLENCE IN STORYTELLING

MacBook – Perform Australia, Fyshwick ACT

CREATIVE VISION PRIZE

Fool For Hire – David Remm, Bowral High School NSW

Honourable Mention

Changelings – Epiphany Arts (Inner West Youth Theatre), Annandale NSW

COMMUNITY SPIRIT PRIZE

We are such stuff as dreams are made on – The Geelong College VIC and

Meridah – Christmas Island District High School WA



We are such stuff as dreams are made on
© The Geelong College VIC

“A very clear sense of place, incredible use of local scenery, exploration of the isolation of living in a rural area and the connection to the country and love of it through the beauty captured in the cinematography. There was a real attempt to portray the emotional landscape of the piece through the cinematography which felt far beyond their years and experience.”

Film Festival Judge Geraldine Hakewill on *Violent Ends*



Violent ends © Max Cazdow-Smith and Sam Parker QLD

“It’s stylistically beautiful, haunting and spooky. It also feels like it’s a story told through a young Muslim lens and has a real clarity of the ‘core’ of the story. I love the pace in this piece, I love how the rhythm of the vision and action rise with the tension. I also feel like this piece has been dreamt and created by the young artists.”

Film Festival Judge Kyle Morrison on *Meridah*



Meridah © Christmas Island District High School WA



Fool for hire © David Remm NSW

REGIONAL TEACHER MENTORSHIP

Year-long support and training for regional teachers

“After a period of feeling jaded I am now immensely looking forward to entering the classroom. It’s one thing being connected to text and seeing its dramatic power – it’s another to inspire young people. I am now eager to use the strategies I was taught to lift and unify a room in a shared understanding. I am inspired to direct Shakespeare again.”

Anne Browning, Alice Miller School VIC

“I am invigorated to take my teaching practice to the next level. I am so enthused and excited to be able to share new skills and confidence with students and fellow staff!”

Casey McKell, Dorrigo High School NSW



Regional Teacher Mentorship © Clare Hawley

The Regional Teacher Mentorship is a one-year, fully funded mentorship for 30 teachers from regional and remote schools across Australia, supported by the Australian Government Department of Education and Teachers Mutual Bank.

After a disrupted program in 2020 due to state border and travel restrictions, it was our pleasure to welcome a cohort of 32 teachers across three weekends for the Regional Teacher Mentorship in 2021. Group 1 joined us for a four-day period in early March, and Group 2 followed shortly thereafter at the end of the month. Group 3 then joined us for the mentorship in May. Mentoring continued throughout 2021, with teachers encouraged to stay connected to Bell Shakespeare beyond that time. Many teachers in the program have engaged with other Bell Shakespeare programs for their school including a number with planned Artist in Residence programs for their entire schools in 2022.

Regional teachers often face unique challenges, from lack of access to professional development and resources, geographic isolation, student disengagement, and other community pressures such as drought and mining closures. The aim of the Regional Teacher Mentorship is to train teachers to use Shakespeare as a vehicle for achieving high academic and social outcomes for students and to positively impact the wider school community in doing so.



Regional Teacher Mentorship © Clare Hawley

REACH

32

teachers participated in the
Regional Teacher Mentorship

29

schools represented

ENGAGEMENT IN

NSW

Ashford, Balranald, Bowraville, Coffs Harbour, Dorrigo, Evans Head, Googong, Lake Cargelligo, Leeton, Merriwa, Moama, Mullumbimby, Nambucca Heads, Scone, Tamworth, Wauchope, Wollongong, Woonona

VIC

Macedon, Mortlake

QLD

Atherton, Condon, Yeppoon

SA

Loxton, Whyalla

TAS

Burnie, Devonport, Latrobe, Launceston

NT

Alice Springs

“The Regional Teacher Mentorship was invaluable. It made me passionate about learning, performing and teaching Shakespeare. It provided a foundation for where to begin and how to grow my students’ skills and confidence (including my own). I discovered so many like-minded people (both teachers and Bell Shakespeare teaching artists) and we became a family in the short four days.”

Cassandra Wynan, Leeton High School NSW



Regional Teacher Mentorship © Clare Hawley



Regional Teacher Mentorship © Clare Hawley

We would like to give special thanks to Teachers Mutual Bank for their support.

TEACHERS MUTUAL BANK

Celebrating five years of partnership



JOAN FRASER

Binnaway Central
School NSW

"I wanted to teach primary because I saw that as a challenge. And they love the language. If you can teach them to see the language, to say the language, to move with the language, they're going to see themselves as a smart kid."



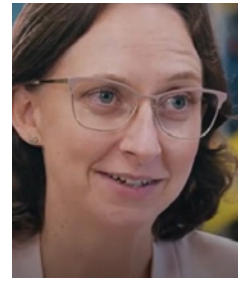
MELANIE GRANT

Murrayville Community
College VIC

"After the week of professional development I was really excited to create projects that I could put back into the community. [My students] were so involved, they begged to study *Macbeth* for the rest of the year. Initiatives like Bell Shakespeare's Regional Teacher Mentorship and the support from Teachers Mutual Bank help ensure we don't have to watch other schools get resources that we miss out on."

2021 marked five years of rich partnership with Teachers Mutual Bank. Teachers Mutual Bank has played an integral part in enabling us to deliver the Regional Teacher Mentorship since 2017 and we are extremely proud of our collaboration.

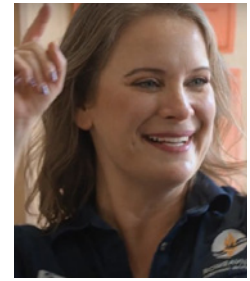
To celebrate our five-year anniversary, Teachers Mutual Bank visited Regional Teacher Mentorship alumni Marcia Bell, Joan Fraser, Melanie Grant and Emma Grant to reconnect and celebrate how the mentorship has changed the way they teach and engage students in the classroom.



EMMA GRANT

Koorda Primary
School WA

"Shakespeare speaks to everyone, no matter who you are, where you are, what you do. Shakespeare has a story for you. The fact that Teachers Mutual Bank is supporting regional teachers is so important. They're really helping teachers be the best that they can be and giving them the confidence to step forward and face challenges not only in the classroom, but also in life."



MARCIA BELL

Bowraville Central
School NSW

"Gumbaynggirr culture is full of stories. So, if I can take the mathematics I'm teaching, and find the story in it, I now have all these powerful tools to share that story with the students to make it relevant to their lives."

Scan to
view full
videos



NATIONAL TEACHER CONFERENCE AND PROFESSIONAL LEARNING

Bell Shakespeare delivered the inaugural National Teacher Conference on 15–16 May via Zoom to 97 teachers. With a diverse mix of speakers, workshops, presentations and screenings, it was extraordinarily rewarding and well-received by teachers.

“Fabulous, accessible and engaging content and presenters”

Victoria Haslam, Box Hill Institute VIC



Head of Education Joanna Erskine interviews John Bell AO

“It was great to see the variety and breadth and range of workshops and presentations. I learned heaps and it left me with lots of questions to ponder.”

Joan Fraser, Binnaway Central School NSW

Presenters included Dr David McInnis from the University of Melbourne, Voice & Text Coach Jess Chambers, teacher and hip-hop artist Charlie Thomson (AKA The Educator), teacher and Principal Ann Caro, Associate Director James Evans, Resident Artist in Education Huw McKinnon and actor/director Abbie-lee Lewis. Artistic Director Peter Evans officially welcomed teachers from our digital studio and John Bell joined us for a special Q&A session, answering teacher questions from across the country.

OUR REACH

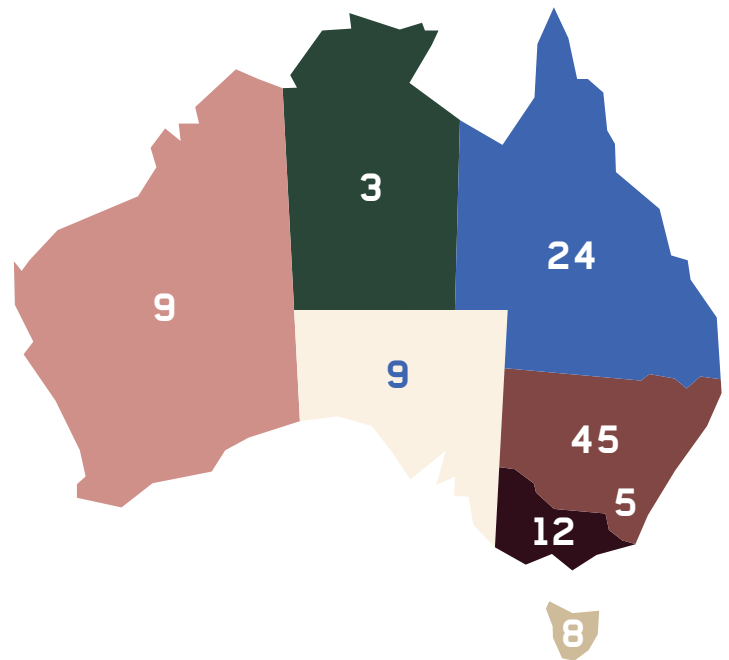
97

teachers participated in digital learning

18

teachers participated in face-to-face professional learning programs

Every state and territory was represented.

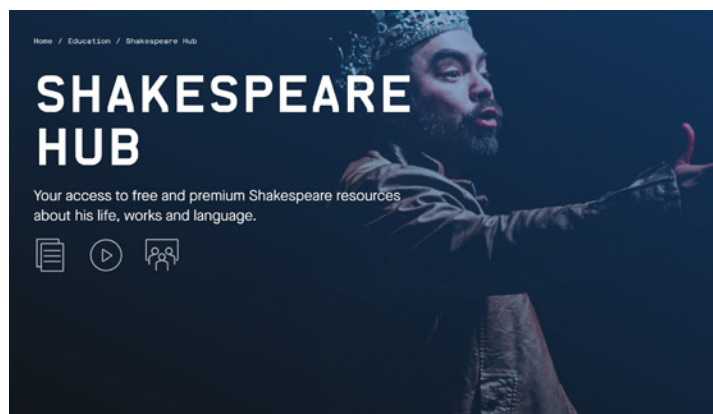


We would like to give special thanks to Teachers Mutual Bank for their support.

 **Teachers Mutual Bank**
We put you first

ONLINE LEARNING

Digital learning for all



SHAKESPEARE HUB

Since the advent of COVID-19, digital resources have become an essential part of student learning. While the online experience can never replace live theatre, demand for digital resources has grown exponentially to support classroom study. Bell Shakespeare has had a long-held goal of creating an online repository of Shakespeare resources for Australian schools, and in 2021 we realised this dream by launching Shakespeare Hub.

Bell Shakespeare education staff and teaching artists worked over 2020 – 2021 to develop a wealth of open-access resources to support teachers and students, available free of charge on our website.

Shakespeare Hub launched with in-depth resources for 12 plays and the list will grow year by year. Plays currently accessible on the Shakespeare Hub are:

Macbeth
A Midsummer Night's Dream
Hamlet
Much Ado About Nothing
Julius Caesar
The Comedy of Errors
Henry IV Part 1
Othello
Richard III
The Merchant of Venice
The Tempest
Romeo and Juliet

Scan to
visit Hub



REACH

6743

unique visits to the Shakespeare Hub in 2021 since its launch in October

IN THE ROUND – CREATIVE DEVELOPMENT

An exciting creative development took place in 2021, made possible thanks to the generous support of the James N. Kirby Foundation — Bell Shakespeare's In The Round project, a new digital video series, intended to give high school students a concise yet insightful overview of a range of Shakespeare's popular plays for study. Starting with *Macbeth*, In The Round is intended to be a series of Shakespeare's plays, told in 4 x 20–30 minute videos.

Each video will involve a small cast of actors performing key excerpts of text from the play, from speeches to edited scenes, in chronological order. Connecting these edited sections of text will be a narrator, who will explain the story, as well as discussing key aspects of each section of text, such as language techniques, character analysis, and more.

In 2021, The Players were at one point forced to self-isolate due to a COVID-19 close contact. During this time they were able to build and develop In The Round via online meetings. For the creative team it was a wonderful and stimulating way to stay connected to Bell Shakespeare and to one another during a difficult period of isolation.

ABOUT SHAKESPEARE'S LANGUAGE

Fact sheets on Shakespeare's language, phrases, word inventions, and techniques. →



GENRES OF SHAKESPEARE'S PLAYS

Read about how editors classified Shakespeare's plays, from comedy to tragedy. →

HUMANS AS REPRESENTED BY SHAKESPEARE

Find out how Shakespeare held up a "mirror to nature" and explored what it means to be human on stage. →



JOHN BELL SCHOLARSHIP

Providing training and access to the theatre industry for young, regional performers

With the support of The Coca-Cola Foundation, Bell Shakespeare was able to facilitate 100 auditions for the John Bell Scholarship nationally in 2021. Auditions were held online and in person and offered young performers the opportunity to workshop their chosen monologue with a Bell Shakespeare teaching artist for 15 minutes.

The winners of the 2021 John Bell Scholarship are confirmed to join us at Bell Shakespeare for a week of learning and performance in 2022.



2021 Scholarship winner Aimee Clifton completes a digital audition



2021 Scholarship winner Griffin McLaughlin completes a digital audition

OUR REACH

NSW

38 auditions

VIC

10 auditions

QLD

16 auditions

WA

1 audition

100

auditions in total

SA

3 auditions

TAS

9 auditions

ACT

2 auditions

NT

21 auditions



Aimee Clifton



Scarlett Moodie



Griffin McLaughlin

THIS YEAR'S RECIPIENTS WERE:

Aimee Clifton

Blue Mountains Grammar School NSW

Griffin McLaughlin

Elizabeth College TAS

Scarlett Moodie

Blue Mountains Grammar School NSW

NATIONAL TOUR

A Midsummer Night's Dream

Our national touring production for 2021, directed by Peter Evans, was a fast-paced, physical and funny production brimming with magic, mirth and mayhem. Originally scheduled to visit 26 venues around Australia over five months, plans were disrupted after COVID-19 outbreaks prompted lockdowns and travel restrictions across many parts of the country.

Despite this, the production was still able to tour to Queensland, Tasmania and the Northern Territory, to a total audience of over 5,000 people. Of these, 704 were students attending school matinee performances at our regional venues.

“The last eight weeks have been a difficult journey for us all, trying to maintain the show in our minds and bodies with various setbacks. It’s been such an emotional journey. I feel such a communal sense of pride, support and determination within the cast and crew since we’ve come back together, that I know this is where I am meant to be.”

Gabrielle Scawthorn (Helena/Starveling/Fairy)



A Midsummer Night's Dream © Brett Boardman

15

total performances

5,513

total attendance

704

student reach

80

total cancelled performances



A Midsummer Night's Dream © Brett Boardman

TO BE

Darwin Entertainment Centre NT 2 Sep 2021
 Mackay Entertainment Centre QLD 8 Sep 2021
 Cairns Performing Arts Centre QLD 11 Sep 2021
 Pilbeam Theatre Rockhampton QLD 14 Sep 2021
 GECC Gladstone QLD 16 Sep 2021
 Redlands Performing Arts Centre QLD 18 Sep 2021
 Theatre North, Launceston TAS 24 Sep 2021
 Theatre Royal, Hobart TAS 28 Sep–2 Oct 2021

NOT TO BE

Orange Civic Theatre NSW cancelled
 Wagga Wagga Civic Theatre NSW cancelled
 Griffith Regional Theatre NSW cancelled
 Dubbo Regional Theatre NSW cancelled
 Arts Centre Melbourne VIC cancelled
 Albany Entertainment Centre WA cancelled
 Bunbury Entertainment Centre WA cancelled
 State Theatre Centre of WA, Perth cancelled
 Lighthouse Theatre, Warrnambool VIC cancelled
 Ulumburra Theatre, Bendigo VIC cancelled
 Mildura Arts Centre VIC cancelled
 West Gippsland Arts Centre VIC cancelled
 Westside Performing Arts Centre, Shepparton VIC cancelled
 Wangaratta Performing Arts Centre VIC cancelled
 Araluen Arts Centre, Alice Springs NT cancelled
 Glasshouse, Port Macquarie NSW cancelled
 NORPA, Lismore NSW cancelled
 Shoalhaven Entertainment Centre, Nowra NSW cancelled
 Sydney Opera House NSW cancelled

From Athens to Howard Springs

In a first for Bell Shakespeare touring productions, the company of *A Midsummer Night's Dream* had the unique experience of quarantining at the Northern Territory's Howard Springs facility ahead of their run in Darwin. Whilst not always easy, the time in quarantine truly showed the resilience and strong bonds within this touring group.

"I do have some set vocal routines – I don't usually do traditional tongue twisters but instead recite bits of ancient Greek – a bit esoteric I know, but I was a classicist so know the language, and the rhythms of Sophocles and Aeschylus are incredibly good for working out your face and tongue. We've even been learning some Greek together in our Zoom vocal warmups (I'd be curious to know what the other residents of Howard Springs think when they hear us all projecting 'ototototoipopoida'!)"

Jane Montgomery Griffiths (Bottom/Egeus)



The cast and crew of *A Midsummer Night's Dream* arrive at Howard Springs.



A Midsummer Night's Dream © Brett Boardman

"I am surprised by the level of frustration I feel at being confined to a small perimeter – particularly not being allowed to go for a walk. I will dance out of Howard Springs and every time I think of this place, I will do a celebratory outside boogie."

Ella Prince (Puck)

ONE MAN IN HIS TIME

A beautiful evening of performance and recollection

“We left in the glow of having communed with one who has burrowed deep beneath the mountain of Shakespeare’s work, weighed every word, and then imparted both his wisdom and his lyricism.”

Sydney Morning Herald (John Shand)

7

total performances

2,514

total attendance

In a year where little was able to make it to the stage, it was our pleasure to present *One Man In His Time*. In this personal, funny and moving solo show, Bell Shakespeare’s Founding Artistic Director John Bell shared his humour, wit and a lifetime of experience walking beside one of the greatest writers to have ever lived. The show took to the stage at Sydney Opera House in March and Canberra Theatre Centre in April.

“This is Bell’s unpretentious modesty. We see him as a cavalcade of his beloved Shakespearean characters, presented with all the gravitas of tragedy, all the joyful absurdity of comedy and all the import of history.”

Canberra Critics’ Circle (Peter Wilkins)



John Bell, *One Man in His Time*, March 2021 © Brett Boardman

HAMLET

Not to be (again)

Our first great loss at the beginning of the COVID-19 pandemic was the 2020 production of *Hamlet*. After two weeks on stage at Sydney Opera House, we were forced to bring the production to a halt, but it was not the end.

In July 2021, the cast of *Hamlet* re-assembled to rehearse in preparation for a new season. For three weeks, and with extensive COVID-safe measures in place, they began breathing life back in to the play and rekindling the spark of creativity in our Argyle rehearsal space.

Upon the extension of Greater Sydney's lockdown at the end of July however, it became apparent that the play was, in 2021, not to be and it was therefore with profound sadness that we again had to cancel the season due to restrictions associated with the pandemic.

The closing of theatres represented considerable loss of income for actors and creatives in Australia and Bell Shakespeare was proud to have continued to employ the cast and crew of *Hamlet* for the duration of their contracts. A silver lining was the opportunity to engage in a creative development of the history plays with Peter Evans. It has long been a dream of Peter's to have an ensemble of actors with whom he could more deeply interrogate these and other plays. Several times a week, the cast of *Hamlet* would meet with Peter online to workshop the plays and develop ideas for future seasons.

The cast also read and workshopped scripts for *The Players* to prepare material for our 2022 in-school touring season and kept our supporters abreast of activities at the company.



Hamlet in rehearsal © Lisa Tomasetti

0

performances

54

total cancelled performances



Hamlet in rehearsal © Lisa Tomasetti



Hamlet in rehearsal © Lisa Tomasetti

MELBOURNE DEBATE

Following two lively debates in Sydney and Canberra in 2020, we were excited to present a third debate on 20 May in Melbourne. The event was attended by 88 guests and was also streamed live from the Melbourne Meat Market to 251 viewers, accessible on a pay-what-you-can basis.



Debaters Julian Burnside AO KC, Nyadol Nyuon and Jane Caro AM © Tiffany Garvie



Artistic Director Peter Evans with debaters © Tiffany Garvie

In front of a live audience, two teams debated the topic 'The better part of valour is discretion', from *Henry IV Part 1*. The topic demonstrated the capacity for Shakespeare's words to spark thought and discussion about our world today and our common humanity. Debaters included Jamila Rizvi, Nyadol Nyuon, Julia Banks, Toby Halligan, Jane Caro AM and Julian Burnside AO KC. The moderator was Philip Crutchfield KC.

"While celebrations of our 30th Anniversary were limited last year due to the pandemic, we launched this debate series to continue to connect with our audiences over Shakespeare's powerful words and look at how they continue to have the ability to stimulate discussion and ideas."

Peter Evans



Debater Nyadol Nyuon © Tiffany Garvie

We would like to give special thanks to Schwartz Media for their support.

The Monthly
The Saturday Paper
7am

SPEAK THE SPEECH

In 2021 our podcast *Speak The Speech* returned for a second, 12-episode season. The series celebrates Shakespeare's greatest speeches with renowned artists and thinkers and offers new perspectives on Shakespeare's work. In season two we were joined by the following guests:



Ben Elton



Nigel Poulton



Michael Chaney AO



Paula Arundell



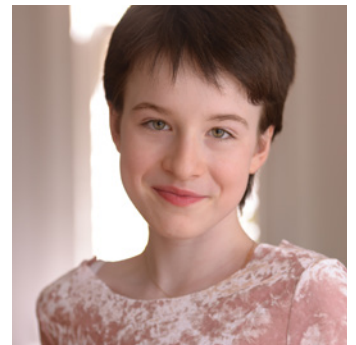
Jane Montgomery Griffiths



Anna Tregloan



Kyle Morrison



Grace Truman



Huw McKinnon



Yalin Ozucelik



Penny Gay



Gabrielle Scawthorne

In 2021, *Speak the Speech* had 15,600 downloads with listeners in 46 countries.

14,043	171
Australia/Oceania	Asia
644	40
North America	Africa
240	14
Europe & UK	South America

THE LOVERS CREATIVE DEVELOPMENT

In November, we were treated to a sneak peek of Laura Murphy's new musical, *The Lovers*. This exhilarating new work follows the plight of Lysander and Hermia, and Helena and Demetrius as they navigate love and heartbreak in *A Midsummer Night's Dream*.



The Lovers creative development © Brett Boardman

IMPACT

13

artists employed

Director Shaun Rennie came on board in November 2021 and the show then underwent a two-week creative development with a cast and live band. One evening in November, a small group of creatives, supporters and staff gathered in the rehearsal space to watch an unforgettable run of *The Lovers*.

For Bell Shakespeare, it was a joyful opportunity to show what was possible. The energy, mirth and excitement sparked by every number was palpable.

For Murphy, it was an opportunity to take a step back and watch how the bones of the show came together on stage and explore the dramaturgical possibilities. Having performed the musical numbers thus far herself, Murphy was able to hear six unique voices bring her characters to life. This also meant Rennie and Murphy could observe the way an audience would interact with the show and adjust the text to improve the audience experience when the time came to rehearse for the Sydney season.



The Lovers creative development © Brett Boardman



The Lovers creative development © Brett Boardman



The Lovers creative development © Brett Boardman

This is a significant piece on the modern Australian theatre landscape – as a brand-new work written by a young female artist, as a piece that will introduce all-new content to a timeless classic, and as a project that will employ upwards of 40 cast, creatives and crew in an industry still dogged by COVID-19.

We are thrilled to now have the opportunity to present *The Lovers* in its magnificent entirety at Sydney Opera House in 2022. This long-awaited production was made possible with the generous support of production patron Katie Page (CEO, Harvey Norman) and *The Lovers* Supporting Syndicate.



The Lovers creative development © Brett Boardman

OTHER ACTIVITIES

Play In A Day

Play In A Day is Bell Shakespeare's highly animated script-in-hand performance series that celebrates the rarely read classics of Shakespeare's contemporaries. Supported by our Play in a Day Patrons Dr Kimberly Cartwright and Charles Littrell, we welcomed guests to our Argyle rehearsal room to enjoy an evening of laughter and wit.

The actors are cast the day before the performance and have a single day with their director before delivering the show to an audience.

Play In A Day launched in 2021 with two works from Shakespeare's contemporary Thomas Middleton: *Women Beware Women*, and *The Revenger's Tragedy*.



Women Beware Women © Richard Hedger

“The highly ranked actors were a great drawcard and it was a rare treat to see their outstanding performances in the ‘raw’.”

Patron feedback

2
performances

2
directors

20
performers

52
audience members
(*Women Beware Women*)

73
audience members
(*The Revenger's Tragedy*)

“*The Revenger's Tragedy* is my favourite play and it was amazing to see it as a Play In A Day... I feel very lucky to have seen it in this format. Lovely venue, wonderful cast.”

Patron feedback



The Revenger's Tragedy © Richard Hedger



Women Beware Women © Richard Hedger

“The performance itself was really interesting ... interesting to see how the group of actors had got up to speed in such a short time and to take in the rawness of the reading as opposed to extensively rehearsed productions.”

Patron feedback



The Revenger's Tragedy © Richard Hedger

OTHER ACTIVITIES

Online event series

In August 2021, when COVID-19 restrictions paused our work on stages, we continued to provide supporters with their Shakespeare fix via a series of special online events including:

AUSTRALIA'S GREATEST SHAKESPEARE FAN QUIZ 18 AUGUST 2021

Hosted by Associate Director James Evans, this online quiz covered Shakespeare's words, works and productions of his plays, testing the participants' knowledge of topics. It was a wonderful way to stay connected to our subscribers and supporters during lockdown.

REACH

160

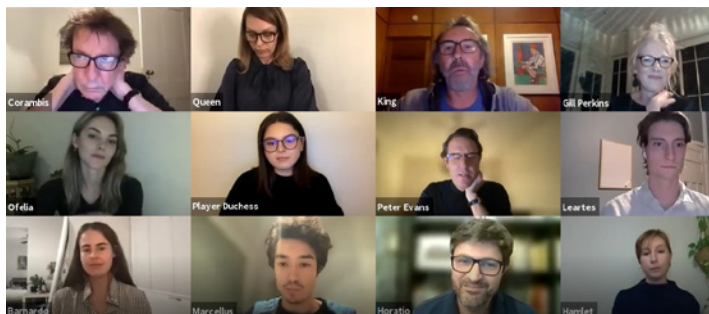
participants

"Just wanted to say how much we enjoyed and appreciated last night's quiz – something different to entertain us and keep our brains active during this long lockdown."

Aileen, VIC

"I participated in your recent online Shakespeare quiz and had an absolute ball. It was so wonderful of Bell to host this and really lifted my spirits."

Shireen Huda, NSW



Online reading of *Hamlet: The First Quarto*

PLAY IN A DAY – HAMLET, THE FIRST QUARTO 25 AUGUST 2021

This special Play In A Day was an online reading of *Hamlet: The First Quarto* and was performed by our *Hamlet* cast.

REACH

135

participants

"I'm hopeful that you heard clapping from numerous sofas, including mine. Thanks so much for the opportunity. We had a really wonderful Wednesday night."

Natalie, VIC

"Thank you so much for this performance! Sorry you couldn't see the audience, I'm sure everyone was enjoying it as much as I was. Great that you're doing this, it's very much appreciated."

Aileen, NSW

SPECIAL SCREENING OF RICHARD 3 28 AUGUST 2021

An exclusive screening for our supporters of the archival recording of Bell Shakespeare's critically acclaimed 2017 production of *Richard 3*, directed by Artistic Director Peter Evans.

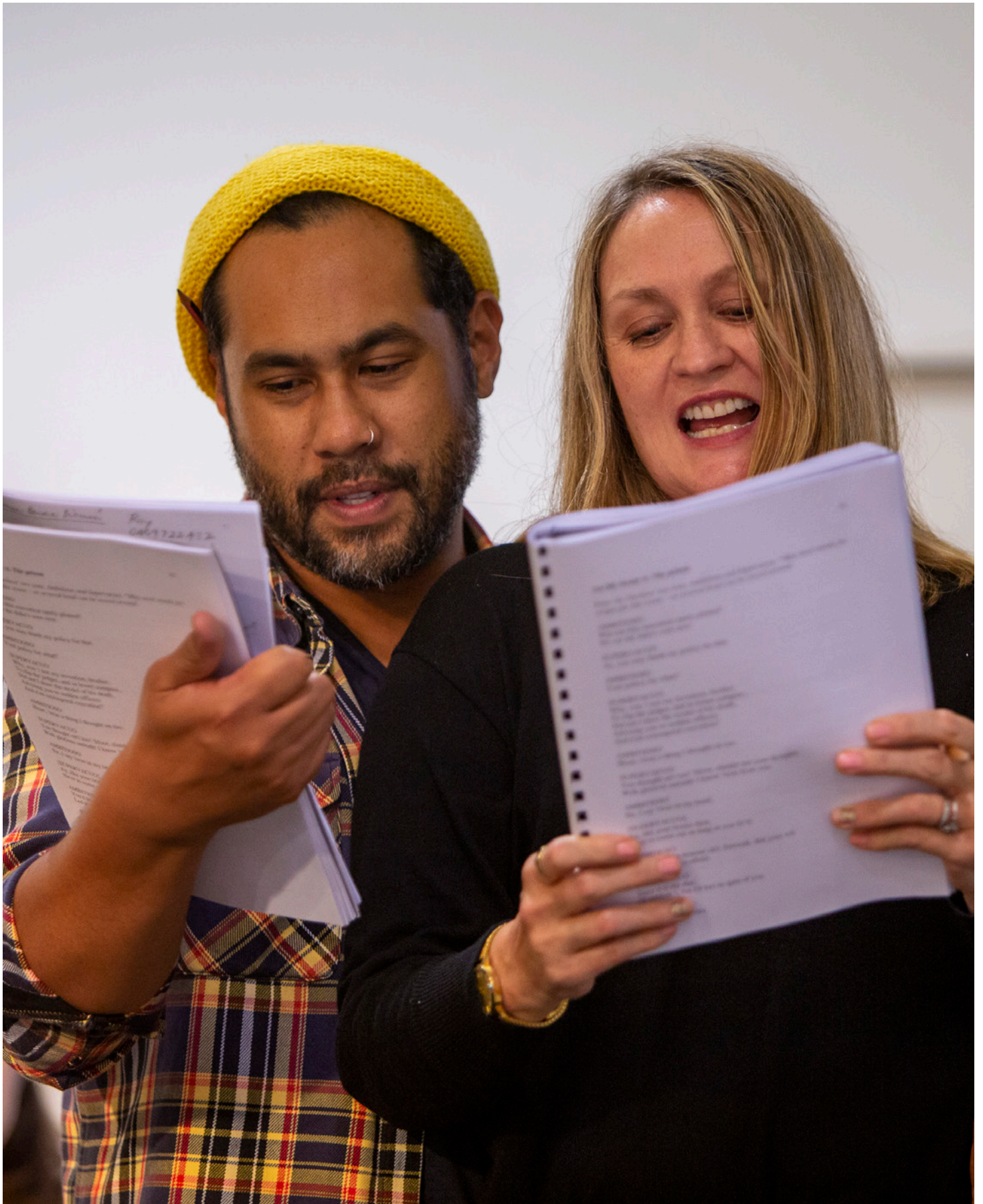
REACH

340

participants

"...last night seeing *Richard 3* again was a treat. Kate Mulvany's performance is spellbinding... Each time I see it, new insights to Richard and all the characters appear."

David, NSW



The Revenger's Tragedy © Richard Hedger



Fur Cloak: Dale Ferguson; © Alexandra Stewart;
Costume worn by John Bell as 'King Lear' in *King Lear*
(2010) directed by Marion Potts.



Honeycomb dress: Anna Cordingley; © Alexandra Stewart;
Costume worn by Lizzie Schebesta as 'Witch' in *Macbeth*
(2012) directed by Peter Evans.



Oral history studio © Andy Muir

COSTUME ARCHIVE AND ORAL HISTORY PROJECTS

Through our partnership with The University of Sydney, Bell Shakespeare was able to offer two internships

Through our partnership with The University of Sydney, Bell Shakespeare was able to offer two internships in 2021 to postgraduate students of the faculty of Arts and Social Sciences. Alexandra Stewart, a student of Art Curating, focussed on Bell Shakespeare's vast costume archive, whilst Andy Muir, a student of Museum and Heritage Studies, focussed on Bell Shakespeare's history through a series of oral history interviews.

ANDY MUIR

Not every internship sees you engaging with living legends. But, then again, this was an extraordinary internship. My first task was to prepare for the recording of a series of oral history interviews by researching the Company's history as already documented by Bell Shakespeare staff and others. I set out to capture a narrative arc from the decisions around the company formation, to the first 1991 performances in a circus tent, and then to headlining the Olympic Arts Festival in 2000.

The beauty of an oral history series is in the raw material that they provide for later analysis and interrogation. Naturally, people remember things differently, they see events with different importance, and they forget things and make mistakes. The interviews were an excellent tool to record Bell Shakespeare's history and now form part of the Company's archives for future historians and researchers.



Donkey Mask: Teresa Negroponte; © Alexandra Stewart;
Costume worn by Richard Piper as 'Bottom' in *The Dream*
(2014) directed by Peter Evans.

Researching and working with archival, personal and non-traditional collections, using oral history techniques and processes, and planning and recording primary research for future researchers are all vital museum and heritage sector skills that I was able to successfully apply. In doing so, I broadened my appreciation of where my Master of Museum and Heritage Studies can take me in the future.

It was a real privilege to work on this project and to help Bell Shakespeare to begin documenting their past in this way. To be asked back after the placement to conduct follow-up oral history work was a real bonus. I thank Elle Hrobat and all of the Bell Shakespeare staff as well as John Petersen for the opportunity, guidance throughout and continued mentoring.

ALEXANDRA STEWART

In 2021, I set out to research and assess the significance of the Bell Shakespeare costume collection, unravelling the golden thread of pivotal flashpoints across an astounding 31-year performance history.

Eagerly awaiting me on day one was a marvellous rack of two dozen, mostly unlabelled costumes on wire hangers, some bent double under the weight of fur or sequined damask, others still sheathed in the plastic-wrap of a post-production dry-clean. With gloved hands, I lifted the first candidate off the rack, spreading the rich folds of a giant bearskin coat out on the table, reimagining John Bell's famous and formidable King Lear.

To research and catalogue a collection of 50 pieces from a grab-and-go dress-up box of over 1,000 undocumented costumes, each had to demonstrate two or more criteria in spades: technical virtuosity; historic weight, worn by famous faces (Joel Edgerton, Anna Volska or Wayne Blair, just to name a few) or exemplary of iconic designers (early Deborah Riley, who would go on to design the wardrobe for *Game of Thrones*); or reminiscent of artistic flashpoints in Bell Shakespeare's history. A part of this Significance process was to talk with the Bell Shakespeare team, to seek news of the memories, recent history and social significance of the costumes from the Company. The team carries a vivid knowledge of them, with an instinctual awareness of which costumes are particularly special and why.

Shakespeare is remarkable for its timeless truth. It still speaks to the human condition, four centuries later. Bell Shakespeare continues to place these works in conversation with contemporary Australian audiences through the visionary history of these costumes.

THANK YOU TO OUR SUPPORTERS



Thank you to each and every supporter whose vital contribution, whether large or small, monetary or in-kind, played a critical role in ensuring our ongoing sustainability.

In 2021 we were reminded that our donors, partners and patrons truly are the beating heart of Bell Shakespeare. In a year that brought heartbreak and triumph in equal measure, to have our supporters rally around us has been a blessing and we are profoundly grateful that you continue to put your faith in our work.

It was our pleasure to welcome 266 new donors in the last year, and to partner for the first time with J.P. Morgan as our Sydney Event Partner. We would also like to extend our heartfelt thanks to the Crown Resorts and Packer Family Foundations and The Scully Fund for safeguarding our Learning programs and allowing us to continue to share Shakespeare with students across the country.

As we begin to find our feet in our new home at Pier 2/3, we are especially grateful to the Neilson Foundation, whose incredible generosity in 2021 has well and truly illuminated the bright future of the company. We have also thoroughly enjoyed reading the beautiful tributes and messages that have come through as our patrons dedicate seats and Seedlings to their loved ones, to be displayed in our venues at Pier 2/3.

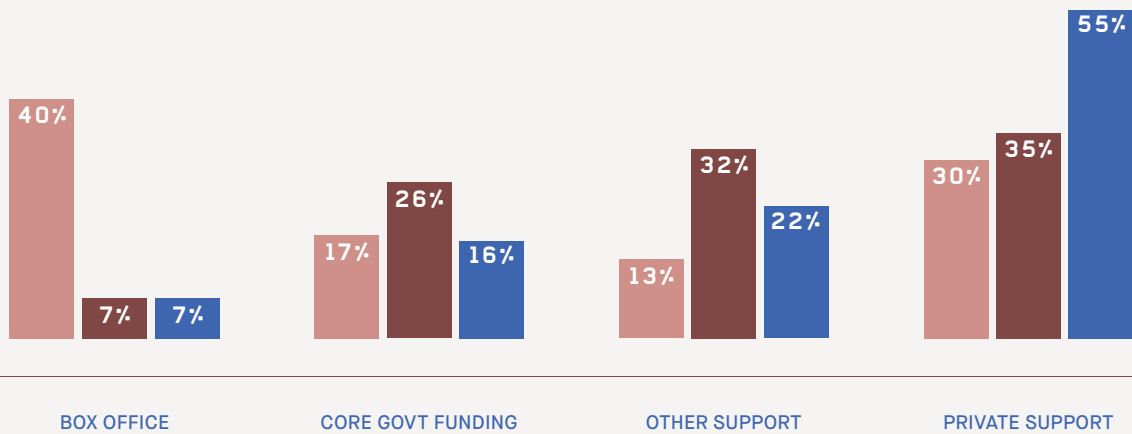
Last but not least, we would like to thank our corporate partners in 2021, including major partners Wesfarmers Arts and Teachers Mutual Bank. Your support has been a guiding light and we are proud that our collaboration has once again allowed us to defy what the pandemic would have otherwise made impossible.

Thank you all for staying at our side in a time where we have had to stand still; we look forward to you being there with us as we step forward again.

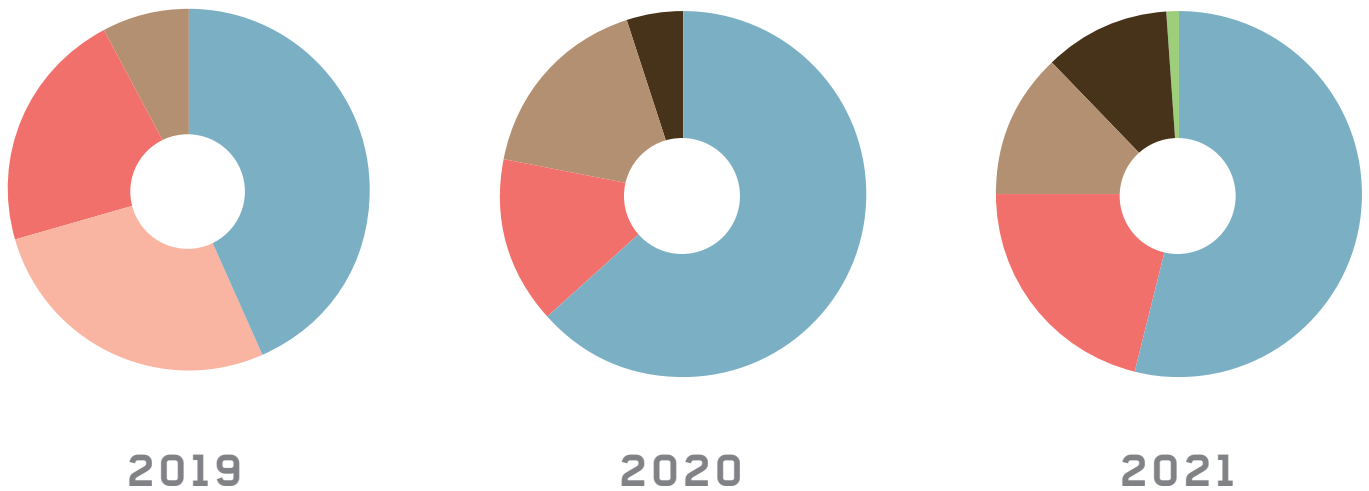
A handwritten signature in black ink, appearing to read 'Debra', with a stylized flourish at the end.

Debra Reinecke
Head of Marketing and Development

SOURCES OF INCOME 2019 VS. 2020 VS. 2021



PHILANTHROPIC GIFTS 2019 VS 2020 VS 2021



40% SUPPORTING CAST & TICKET DONATIONS
 25% GALA & SPECIAL EVENTS
 20% SHARING SHAKESPEARE
 7% APPEALS & WEB SUGGESTED DONATIONS

64% SUPPORTING CAST & TICKET DONATIONS
 15% SHARING SHAKESPEARE
 17% APPEALS & WEB SUGGESTED DONATIONS
 5% ARTISTIC DIRECTOR'S CIRCLE

54% SUPPORTING CAST & TICKET DONATIONS
 21% SHARING SHAKESPEARE
 13% APPEALS & WEB SUGGESTED DONATIONS
 11% ARTISTIC DIRECTOR'S CIRCLE
 1% SPECIAL EVENT DONATIONS



A Midsummer Night's Dream in rehearsal © Brett Boardman

THANK YOU TO OUR TEACHING ARTISTS AND PERFORMERS

TEACHING ARTISTS

Danny Ball
Caitlin Beresford-Ord
Julia Billington
Caitlin Burley
Alex Chalwell
Jack Crumlin
Emily Edwards
Ryan Hodson
Jake Fryer-Hornsby
Giles Gartrell-Mills
Oliver Harris
Rob Jago
Teresa Jakovich
Felix Jozeps
Thomas Larkin
Michael McCall
Huw McKinnon
Sarah Ogden
Tim Paige
Jessica Paterson
Paul Reichstein
Matilda Ridgway
Christopher Tomkinson

2021 THE PLAYERS

William Bartolo
Nicola Bowman
Caitlin Burley
Eleni Cassimatis
Jake Fryer-Hornsby
Ryan Hodson

A MIDSUMMER NIGHT'S DREAM CAST

Jane Montgomery Griffiths
Michael C. Howlett
Abbie-lee Lewis
Kyle Morrison
Ella Prince
Imogen Sage
Gabrielle Scawthorn
Jacob Warner

HAMLET CAST

Harriet Gordon-Anderson
Lucy Bell
Jeremi Campese
Tony Cogin
Jack Crumlin
James Evans
Melissa Kahraman
James Lugton
Jane Mahady
Robert Menzies
Rose Riley

PLAY IN A DAY CAST – WOMEN BEWARE WOMEN

Harriet Gordon-Anderson
Helen Thomson
Toby Schmitz
James Evans
Violette Ayad
Richard Pyros
Danielle King
Madeleine Jones
Jack Crumlin
James Lugton

PLAY IN A DAY CAST – THE REVENGER'S TRAGEDY

Toby Schmitz
Nikki Shiels
Yalin Ozucelik
Richard Pyros
Damien Strouthos
Ray Chong Nee
David Roberts
Helen Thomson
Tina Bursill
Jana Zvedeniuk

ONE MAN IN HIS TIME CAST

John Bell

THE LOVERS CREATIVE DEVELOPMENT CAST, BAND AND CREATIVES

Monique Sallé
Loren Hunter
Stef Jones
Callum Francis
Billie Palin
Linder Furnell
Mark Chamberlain
Pat Madden
Laura Murphy
Shaun Rennie
Marg Horwell
Trent Suidgeest
David Bergman

MELBOURNE DEBATERS

Julia Banks
Julian Burnside AO KC
Jane Caro AM
Toby Halligan
Nyadol Nyuon
Jamila Rizvi

THANK YOU TO OUR PARTNERS

In 2021 we give special thanks to Neilson Foundation for their generous donation of \$3 million – the largest single gift Bell Shakespeare has ever received.



PREMIUM COMPANY PARTNER



Hamlet Season Partner

PROGRAM PARTNERS



Perth Season Partner



Regional Teacher Mentorship Partner

GOVERNMENT PARTNERS



Australian Government
Department of Education

Bell Shakespeare's education program is supported by the Australian Government Department of Education. The Company is assisted by the Australian Government through the Australia Council, its arts funding and advisory body, and by the NSW Government through Create NSW.

TRUSTS AND FOUNDATIONS



PACKER FAMILY
FOUNDATION

SCULLY FUND

THE
LOW FAMILY
FOUNDATION

WeirAnderson
FOUNDATION



COMPANY PARTNERS

**KING & WOOD
MALLESONS**
金杜律师事务所

Company Partner



Brave New World
Breakfast Partner



Legal Partner



Shakespeare Seminar Partner

J.P.Morgan

Sydney Event Partner

SUPPORTING PARTNERS



Accommodation Partner
Melbourne



Accommodation Partner
Canberra



Accommodation Partner
Sydney



Wine Partner



Exclusive Spirits
Partner



Catering
Partner



Media Partner



AV/Production
Partner



Printing
Partner

INDUSTRY PARTNERS



OUR SUPPORTERS

Celebrating our donors

We are incredibly grateful for every dollar our donors contribute towards making Bell Shakespeare the company it is today.

FOUNDING BENEFACTOR

The Late Anthony Gilbert AM

PRINCIPAL BENEFACTOR

La Trobe Financial

LIFE MEMBERS

Ilana Atlas AO
John Bell AO OBE
Tim Cox AO & Bryony Cox
Susie Dickson & The late Martin Dickson AM**

Graham Froebel
Virginia Henderson AM
David Pumphrey OAM

LEGACY GIFTS

We remember and honour those who have generously supported Bell Shakespeare through a bequest.

The late Brian Timothy Carey
The late Anthony Gilbert AM
The late Catherine Guy
The late Mary Elizabeth Maltby
The late Carina Grace Martin

The late Elizabeth Pamela Roberts
The late Barbara Wright
Anonymous

LEGACY CIRCLE

We honour and thank our supporters who have notified us that they intend to leave a gift in their will, allowing us to plan for the future with confidence and continue to touch the lives of millions of Australians.

Rick Burrows
Linda Herd
Dr David Howell & Sarah Howell
Bruce & Natalie Kellett
Jane Kunstler
Diane Matthews
Dr Alana Mitchell*
Dr Anne Reeckmann & Dr Gary Holmes*
David & Jenny Templeman**
Anonymous (32)

INFINITE SPACE

Thank you to our Infinite Space capital campaign donors who have helped us build a future for Bell Shakespeare.

The Visionaries

Neilson Foundation
Ilana Atlas AO & Tony D'Aloisio AM
Dr Kimberly Cartwright & Charles Littrell
Lachlan & Rebecca Edwards
La Trobe Financial
Low Family Foundation
Dr Anne Reeckmann & Dr Gary Holmes*
Ruth Ritchie
Alden Toevs & Judi Wolf
Michelle Zhang

The Dreamers

Kevin Cosgrave
Susie Dickson & The late Martin Dickson AM**
Kathryn Greiner AO
Anne Loveridge
Nick & Caroline Minogue**
Julia Ritchie
Anonymous (1)

“I could be bounded in a nutshell and
Count myself a king of infinite space...”

Hamlet, Act 2, Scene 2

The Nobles

Dr Brett Archer
Keith Bayliss & Holly Mitchell*
Andrew & Catherine Caro
Amy Crutchfield & Philip Crutchfield KC*
Diane & John Dunlop**
Shannon Finch
Natalie Hickey
Justice François Kunc & Felicity Rourke
Joe Hayes & Jacinta O'Meara
Linda Herd
Greg Hutchinson AM & Lynda Hutchinson
Sarah Lowe
Bruce Meagher & Greg Waters
Dr Alana Mitchell*
Peter & Felicia Mitchell
Serow-Neijts Family
Kenneth Reed AM**
Alice Tay & Warwick Gresty
Helen Williams AC
Anonymous (1)

We Happy Few

Special thanks to our We Happy Few giving circle who supported us in the early days and have come together to support the Infinite Space capital campaign.

Sandra & Bill Burdett AM
Tim Cox AO & Bryony Cox
Michael S Diamond AM MBE
Susie Dickson & The late Martin Dickson AM**
Jim Dominguez CBE AM & Sue Dominguez OAM
Bill Hayward OAM & Alison Hayward **
Virginia Henderson AM
Timothy Pascoe AM & Eva Pascoe
Lady Potter AC CMRI
David Pumphrey OAM & Jill Pumphrey**
Charlie Shuetrim AM & Sandy Shuetrim
George & Sabrina Snow
Ezekiel Solomon AM
Anonymous

DEDICATIONS

We would like to thank our donors who supported our move to Pier 2/3 in 2022 by dedicating a seat in The Neilson Nutshell and a Seedling in The Seed.

The Neilson Nutshell:

Seat Plaque Dedications

Colin Adams & Richard Adams
 Pam Anson
 Fiona Archer
 George & Billinda Auld
 Rob & Lyn Backwell
 Jock Baird
 Sally Bassar
 Keith Bayliss & Holly Mitchell*
 Alice Bedlington
 Katherine A Brazenor
 Dr John Brookes
 Matthew Brown & Julie Alt
 Jan Burnswoods
 Rick Burrows & Robyn Powell
 Jane Caro AM & Ralph Dunning
 Di Challenor
 Prof Frances Christie
 Robert & Carmel Clark**
 Tim Cox AO & Bryony Cox
 Amy Crutchfield & Philip Crutchfield KC*
 Joanne & Sue Dalton**
 Darin Cooper Foundation
 Diane & John Dunlop**
 Lachlan & Rebecca Edwards
 Graham Evans
 Jenny Fagg
 Rebecca Finkelstein & Michael Sirmai
 Richard Fisher AM & Diana Fisher
 Kathryn Greiner AO
 Mark & Patricia Grolman
 Joe Hayes & Jacinta O'Meara
 Meredith Hellicar
 Linda Herd
 Alison & Bill Herd
 Natalie Hickey & Christopher Fox
 John Hindmarsh AM
 & Rosanna Hindmarsh OAM**
 Amanda Hing
 Dr Barbara Holmes
 Mathilde Kearny-Kibble
 Dr Sue Kesson
 Dinah Kimbell
 Justice François Kunc & Felicity Rourke
 John Lewis
 Simone Liosatos

Anne Loveridge
 Maryam Master & James Evans
 Greg McNulty
 Dr Stephen McNamara
 Frances Muecke & Dr Stephen Meucke
 Dr Alana Mitchell
 Peter & Felicia Mitchell
 Kathy Olsen & Bruce Flood*
 Roslyn Packer AC*
 Matthew Paliaga
 Dr Susan Pugh & Prof Michael Bennett AM*
 David Pumphrey OAM & Jill Pumphrey**
 Dr Anne Reeckmann & Dr Gary Holmes*
 Crispin Rice
 Jacqui Scheinberg
 Penelope Seidler AM
 Lynette Shelley
 Sam Sheppard*
 Diane Sturrock
 Gene Tilbrook
 Maya vanden Driesen
 Susan Viney**
 S & G White
 John Wilson & Robyn Pitt
 Anonymous (1)

The Seed: Seedling Dedications

George & Billinda Auld
 W & G Bairstow
 Trupti Bapat
 Alice Bedlington
 Bell Shakespeare Development Team 2022
 Matthew Brown & Julie Alt
 Tim & Margaret Cavanough
 Di Challenor
 Prof Frances Christie
 Kathryn Clancy
 George Clark**
 Lachlan & Rebecca Edwards
 Katherine Grace
 Linda Herd
 Dr Barbara Holmes
 Susan Howard-Bowmer
 Dr Rebecca Huntley
 Ann Kemeny
 Dr Sue Kesson*
 Carolyn Lowry OAM & Peter Lowry OAM
 Diane Matthews
 Helen Machalias
 Felicity & Andy McLean
 Matthew Paliaga
 Roslyn Packer AC*
 Rosemary Palmer
 Rosalie Pratt
 David Pumphrey OAM & Jill Pumphrey**
 Dr Anne Reeckmann & Dr Gary Holmes*
 Crispin Rice
 Fiona Sawyers
 Maya vanden Driesen
 Susan Viney**
 Prof Robert White

ARTISTIC DIRECTOR'S CIRCLE

Thank you to our 2021 Artistic Director's Circle members who are passionate about the process of making theatre and are supporting and observing this year's mainstage and education seasons.

Katherine A Brazenor
Darin Cooper Foundation
Lachlan & Rebecca Edwards
Shannon Finch
David & Deborah Friedlander
Kathryn Greiner AO

Linda Herd
Low Family Foundation
Andrew Price
Sam Sheppard

ANNUAL GIVING

We are incredibly grateful for our annual donors who contribute essential funds, via Supporting Cast and Sharing Shakespeare, to the cost of our core operations. This ensures that we are able to focus our efforts on finding new ways to create, collaborate and educate on the mainstage and beyond including life-changing opportunities provided through our learning and outreach programs nation-wide.

\$50,000+

Amy Crutchfield & Philip Crutchfield KC*
Tom & Elisabeth Karplus**
Sue Maple-Brown AM*
Dr Anne Reeckmann & Dr Gary Holmes*
Sally White OAM

\$20,000+

Robert Albert AO & Libby Albert**
Dr Kimberly Cartwright & Charles Littrell
Louise Christie*
John Hindmarsh AM
& Rosanna Hindmarsh OAM**
Bill Hayward OAM & Alison Hayward
Low Family Foundation
Sue Maple-Brown AM*
Annie & John Paterson Foundation
Neil & Rachel Sinden
Andrew Sisson AO
Alden Toevs & Judi Wolf
Weir Anderson Foundation

\$10,000+

Susan Burns*
Canny Quine Foundation
Michael & Christine Clough
Kevin Cosgrave
Martin Dickson AM & Susie Dickson**
Jane Hansen AO & Paul Little AO
Linda Herd
Justice François Kunc & Felicity Rourke

The Alexandra & Lloyd Martin
Family Foundation
Anne Loveridge
Nick & Caroline Minogue **
Roslyn Packer AC *
Kenneth Reed AM **
Diane Sturrock
Gene Tilbrook
Trikojus Education Fund
Maya vanden Driesen

\$5,000+

Dr Brett Archer
Fiona Archer
Di Challenor
Robert & Carmel Clark**
Darin Cooper Foundation
Diane & John Dunlop*
Lachlan & Rebecca Edwards
Rebecca Finkelstein & Michael Sirmai
Jinnie & Ross Gavin
Dr Sue Kesson*
J R Nethercote
Omnia Aqua
Lady Potter AC CMRI
Dr Susan Pugh
& Prof Michael Bennett AM*
David Pumphrey OAM & Jill Pumphrey**
Viorica Samson
Jacqui Scheinberg
Jann Skinner*
Dick & Sue Viney**
Peter Wilson & James Emmett
Annabel White
Anonymous (3)

\$2,500+

Paul Bedbrook
Janet C Binns
Dr John Brookes
Jan Burnswoods*
Darren Cook
Dr Jean Finnegan & Peter Kerr*
Belinda Gibson & Jim Murphy
Sharon Goldschmidt

The Hon Peter Heerey AM KC
& Sally Heerey**
Natalie Hickey
In memory of Armon Hicks Jnr*
David Howell & Sarah Howell
Vincent Jewell**
Adrian Lotrean & Jerome Tse
Luke Merrick
Dr Alana Mitchell*
Judith Musgrave Family Foundation
Catherine Parr & Paul Hattaway**
Eva Pascoe & Timothy Pascoe AM
John B Reid AO & Lynn Rainbow Reid AM
Dr Tim Turner
Anonymous (6)

\$1,000+

Acumenta
Colin Adams & Richard Adams
Dr Margaret Barter
Sally Basser
Berg Family Foundation
Matthew Brown & Julie Alt
Virginia Brown
The Hon J C Campbell KC & Mrs J Campbell
John Cauchi AM SC & Catherine Walker
PSM
Jenny & Stephen Charles
Christopher Doyle & Co.
George Clark**
Russ & Rae Cottle
Jason Craig
Professor A T Craswell**
Joanne & Sue Dalton
In memory of Robin Delahunty
Mark Dempsey & Jodi Steele
Michael S Diamond AM MBE
Larry & Ashlyn Diamond
Dr Antonio Di Dio
Dr & Mrs B Dutta**
Louise Einfield & Bruce Hartnett AM
Elizabeth Evatt AC*
Shannon Finch
Richard Fisher AM & Diana Fisher

Jeanmaree Furtado & Scott Wilson
 Rodney Garrett kc
 Mary-Jane Gething
 Jennifer Giles**
 David Gordon & Vicki Biggs
 Richard & Anna Green*
 Kathryn Greiner ao
 Alexandra & Fred Grimwade
 Mark & Patricia Grolman
 Steven & Kristina Harvey
 Paul Hayes kc & Rachel Broderick
 Jane Hemstritch
 Lilian Horler & the late Ken Horler AM KC**
 Maureen Horne
 Mike Hutchinson*
 Iphygenia Kallinikos
 George & Karen Janko
 Anthony Kemeny
 Mike Kendall
 Julie & Michael Landvogt
 Owen Lennie*
 Catherine Livingstone ao
 & Michael Satterthwaite
 Richard & Elizabeth Longes
 Carolyn Lowry oAM & Peter Lowry oAM
 Hon Ian MacPhee ao & Julie MacPhee*
 Maple-Brown Abbott Limited
 Diane Matthews
 In memory of Helen McFadyen**
 Banjo McLachlan & Paul Mahony
 Dr Diana Milliner & Robert Milliner
 Marjorie Ann Moffatt
 Naylor Stewart Foundation
 Patricia Novikoff
 Kathy Olsen & Bruce Flood*
 Meredith Paynter
 Gill Perkins & Family
 J & K Preedy
 Bill & Katharine Ranken
 Mary & Michael Regan**
 Greg J Reinhardt AM**
 Bob Richardson
 Jennifer Royle
 Diane & David Russell
 Keiko Schmeisser
 Warren Scott & Pamela Williams
 John Sheahan kc
 Wendy Shelton
 Lynne Sherwood & the Late Tim Sherwood
 Jann Skinner
 Geoffrey Starr
 Shirley Sullivan

Patrick Szetho
 Alice Tay & Warwick Gresty
 David & Jenny Templeman*
 Mike Thompson
 Nicholas Walter and Lisian Teh
 Annie & Anthony Whealy kc
 Janet Whiting AM & Phil Lukies
 George M Wilkins**
 Helen Williams ac
 Anonymous (12)
 \$500+
 Rob & Lyn Backwell
 Helen Baxter
 John Bell ao OBE & Anna Volska*
 Alice Bedlington
 Amanda Bishop
 Dr Neal Blewett
 Stephen Booth & Zorica Rapaic
 Mignon Borgas & Noel Borgas
 Dawn Brown
 Rick Burrows
 Andrew & Catherine Caro
 Jane Caro AM & Ralph Dunning
 Pip & Tim Christian
 Prof Frances Christie
 Coles Danziger Foundation
 Frances Cook
 The Crumlin Family
 Daryl & Nola Daley
 Jane Diamond*
 Roslyn & Michael Dunn**
 Elaine Evans
 Peter FitzSimons AM & Lisa Wilkinson
 Professor PJ Fletcher AM
 F J Gale*
 Justin & Anne Gardener**
 Leigh & Adele Gordon
 Janette Gordon-Clark*
 Bindi Throsby Gove
 Brett Grehan
 Alison Hammond
 Lesley Harland**
 Cam Johnston & Caroline Johnston oAM**
 Angela Jones
 Mathilde Kearny-Kibble
 Bruce & Natalie Kellett
 Paul King
 Krysia Kitch
 Professor Roger Layton & Dr Marilyn Layton
 Melissa Lea
 Cheryl Lo
 Peter Lockwood

Dr Linda Lorenza
 Robin Low
 Leo Ma
 Hugh Mackay ao & Dr Shelia Mackay**
 Maryam Master & James Evans
 Lucy Matthews
 Lisa McKay & Philip Ryan
 Stephen McNamara
 Simone Menz
 Terje Mirlieb
 Liz Nield
 J Norman**
 Alice Oppen oAM
 Rosemary Palmer
 John Vincent Parker
 Brandon Pincombe
 Debra Reinecke & Stuart Le May
 Declan & Carmen Roche
 Trudie Rogers
 Prof David Rolph
 Fiona Sawyers
 Elisabeth & Doug Scott
 Penelope Seidler AM
 Carolyn Spiers
 Helen Swift & Les Neulinger*
 Robin Syme AM & Rosemary Syme*
 Leonie Thiele
 Sally Troy & John Kalish
 Suzanne Tzannes & Ross Tzannes AM
 Judith Wheeldon
 Dr Peter White
 Christine Williams
 Peter Willis sc & Eleneth Woolley
 Anonymous (12)

**Supporting for 20+ years

*Supporting for 10+ years

We would like to thank our family of donors who contribute up to \$500. Every gift makes a difference to what we are able to achieve. The annual gifts recognised here were received in the 2021 Calendar Year.

A photograph of a woman with dark hair tied in a bun, wearing a grey tank top, sitting at a piano and looking down at the keys. The piano is a dark wood upright model. The background is a plain, light-colored wall with a window on the right side. The text 'GET IN TOUCH' is overlaid in large, white, sans-serif capital letters. 'GET' is in the top left, 'IN' is in the center, and 'TOUCH' is in the bottom right.

GET

IN

TOUCH

Our donors are at the heart of what we do. To find out more about how your support can make an impact across Australia in schools and in theatres, please contact:

DEBRA REINECKE
HEAD OF MARKETING AND DEVELOPMENT

02 8220 7521
0420 756 022
giving@bellshakespeare.com.au

LUCY MATTHEWS
ANNUAL GIVING MANAGER

02 8220 7509
0420 882 198
lucym@bellshakespeare.com.au

ELLE HROBAT
PARTNERSHIPS MANAGER

02 8220 7510
0408 461 085
elleh@bellshakespeare.com.au

ELIZA AULD
DEVELOPMENT AND EVENTS MANAGER

02 8220 7511
0443 679 747
elizaa@bellshakespeare.com.au

BELL SHAKESPEARE'S

1/13A Hickson Road
Dawes Point NSW 2000

PO Box 10
Millers Point NSW 2000 Australia

T +61 2 8298 9000
E mail@bellshakespeare.com.au

 [BellShakespeareCo](#)

 [BellShakespeare](#)

 [bellshakespeare](#)

 [bell-shakespeare](#)

BELLSHAKESPEARE.COM.AU